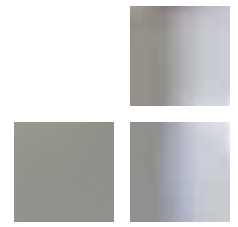




Stanton Group

A Division of Gallagher Benefit Services, Inc.

Olney/HRadvantage



## Concerned About Attracting & Retaining Key Talent in Today's Economy?

Gain insight into how retail pharmacy providers are compensating their talent. Discover where your organization falls on the pay spectrum and make strategic decisions in 2010!



To participate in this survey, please contact

Thomas Cummins  
Olney/HRadvantage  
Thomas\_Cummins@hradv.com  
617.227.1642

Please note that this survey is geared toward organizations with less than 100 employees.

[www.gallagherbenefits.com/Minneapolis](http://www.gallagherbenefits.com/Minneapolis)

If you haven't yet discovered the value of Stanton Group's, Olney/HRadvantage's new sister company, Pharmacy Survey, this is the year to learn more!

The 2010 Pharmacy Survey includes data from the largest retail chains as well as single location pharmacies and provides detailed comprehensive information at a **very competitive price**. For only \$450, you'll receive:

- **Detailed Reporting** – Including national, state and local data cuts based on ZIP codes, scope measures (revenue and FTEs) and type of setting (retail versus hospital).  
**Bonus!** An online custom cut program is included so participants can make unlimited custom cuts of the data.
- **Ease of Participation** – This survey is in a flexible, electronic format. Our survey consulting team will work with you to make your participation seamless and effortless. Your participation is important to us and we are happy to accommodate your needs.
- **Unparalleled Reliability** – Our professionals extensively vet the data and work with the participants to ensure that the most accurate data is submitted and reported.
- **Unique Retail vs. Hospital Analysis** – We provide comparisons of the two distinct markets and how they differ across various regions of the county.
- **Adherence to Justice Department Guidelines for Compensation Surveys** – The survey is in compliance with current governmental guidelines, easing participant worry over survey liability.